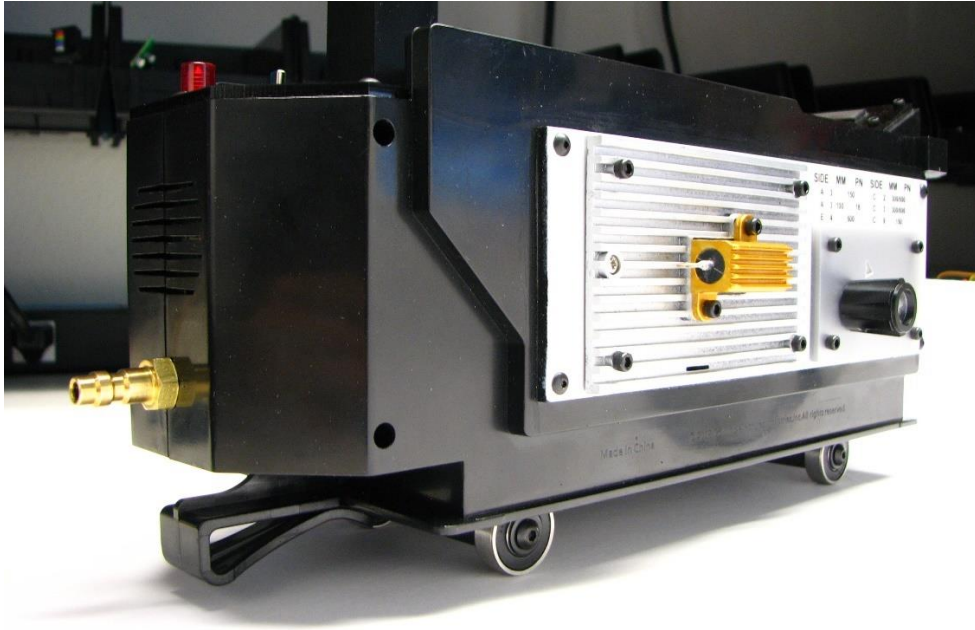


Introduction

Congratulations on purchasing the Spirit Ghost Trap Wheels Upgrade kit that makes your trap wheels look much more like the screen used ghost traps from the Ghostbusters movies.

The photos are of a Spirit Halloween Ghost Trap that has the GhostLab42 Spirit Ghost Trap Cosmetic kit installed. After the cosmetic upgrade, the wheels just had to be upgraded... Here is the trap with the new Wheels Upgrade kit installed:



Here is a reference photo of the screen used pack (GB2) that shows a wheel assembly:



Installation in the Spirit Halloween Pack

Parts Identification:

There are multiple parts included in this kit. Here are the parts laid out somewhat grouped by what area of the trap they are going to upgrade:



Parts:

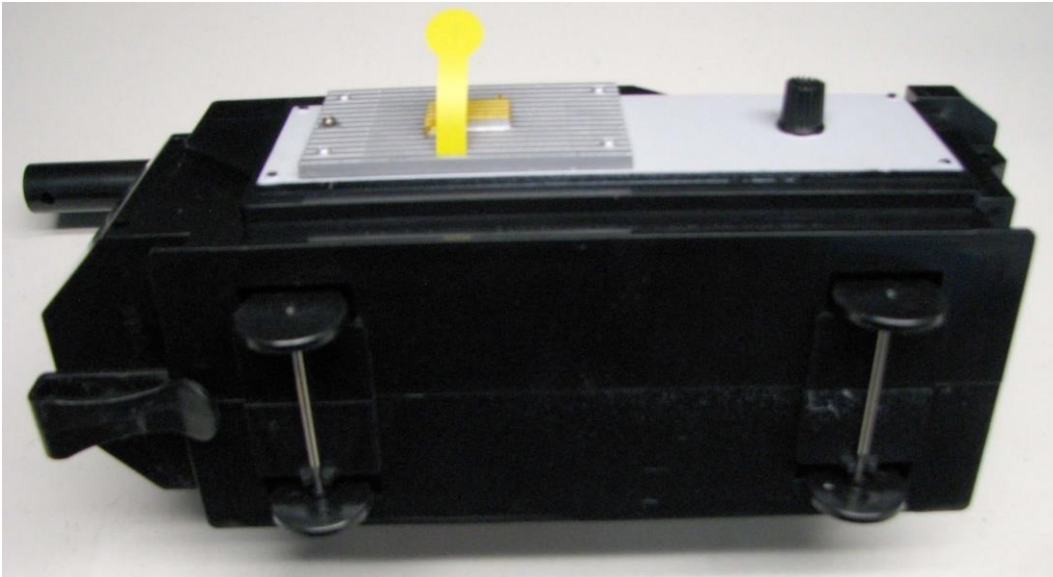
- 1) 3D printed main axel assembly (same as #2)
- 2) Main axel assembly (same as #1)
- 3) 8x short screws to attach the two axels (#1 and #2) to the bottom of the trap
- 4) 4x new wheels with ball bearings (some grease may be noticeable from the races)
- 5) 4x 3D printed wheel alignment pieces to be inserted into the wheels #4
- 6) 4x Long screws to attach wheels #4, with alignment pieces #5 into main axils #1 and #2.
- 7) 4x washers to go on long screws #6 and hold the wheel assemblies in place.

Recommended tools and supplies:

- 3/32" Allen wrench (Hex Wrenches)
- 9/64" Drill bits
- Rotary power tool (such as a Dremel) with sanding bits
- Small flat file

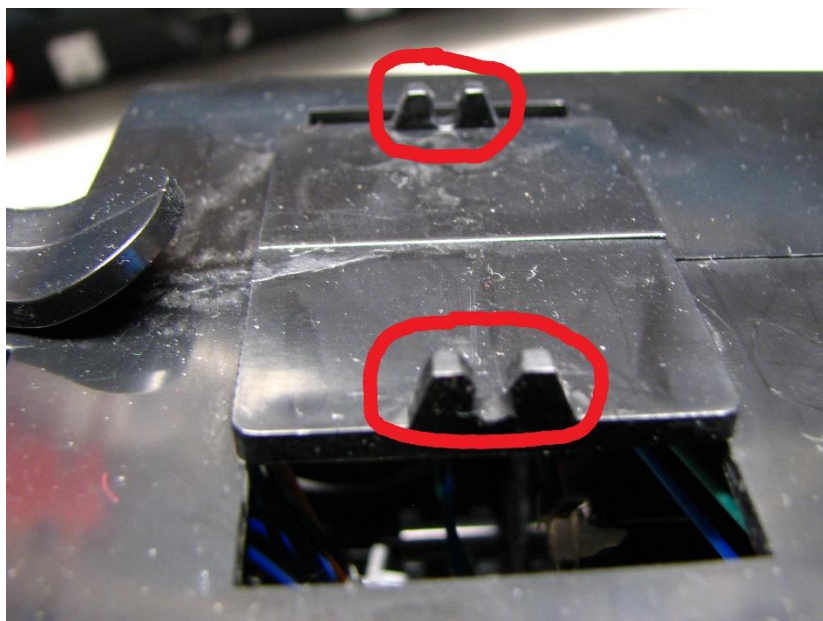
Remove the existing wheels:

Just pop off the two sets of wheels. They are held on by friction clips, so you can grab one wheel and pop that one side out just a little (enough to clear the retention clip) and then pull on the other wheel and pop out the other side.



Yes, this is a picture of a plain Spirit Halloween Ghost Trap – I forgot to get the picture of the trap with the cosmetic kit before I removed the original wheels.

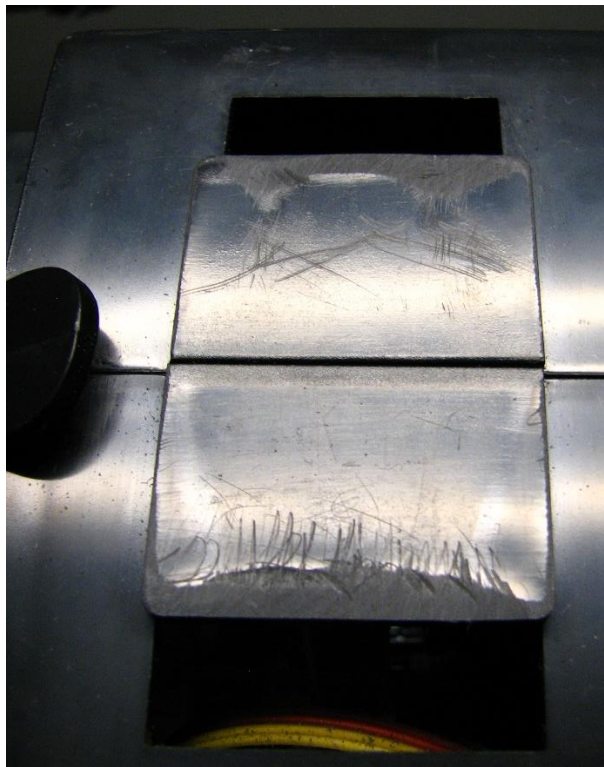
These features that held the axel in place will need to be removed:

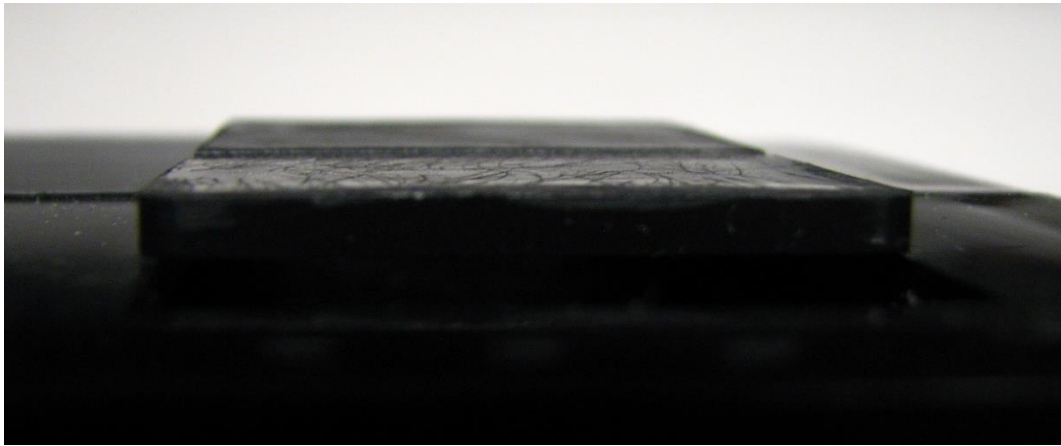
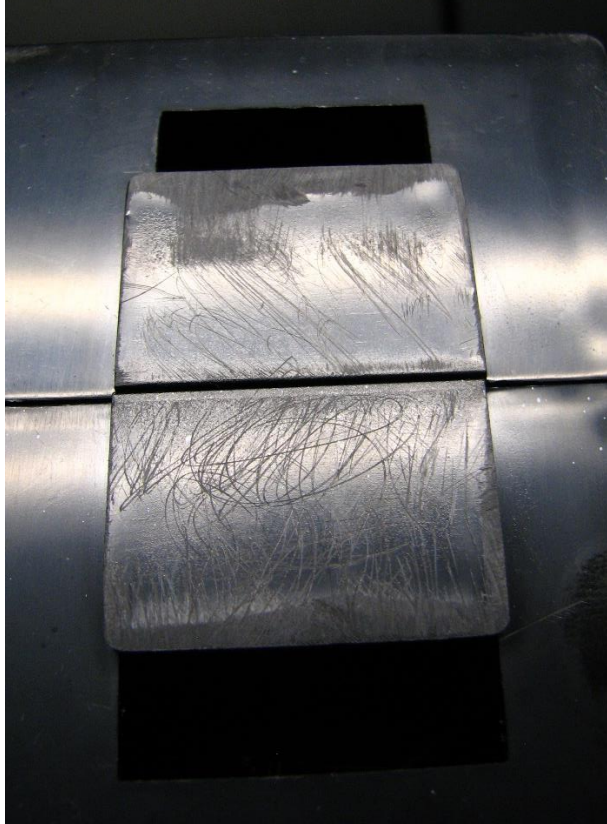


Prepare the base of the trap:

Next use the Dremel to cut and grind the 4 clips off that were used to mount the original wheels by holding the thin metal axel.

Once nearly flat, I used a small flat file to make sure the area where the wheels will be mounted were smooth and flat so the main axels (#1 and #2) can sit flat on those areas.





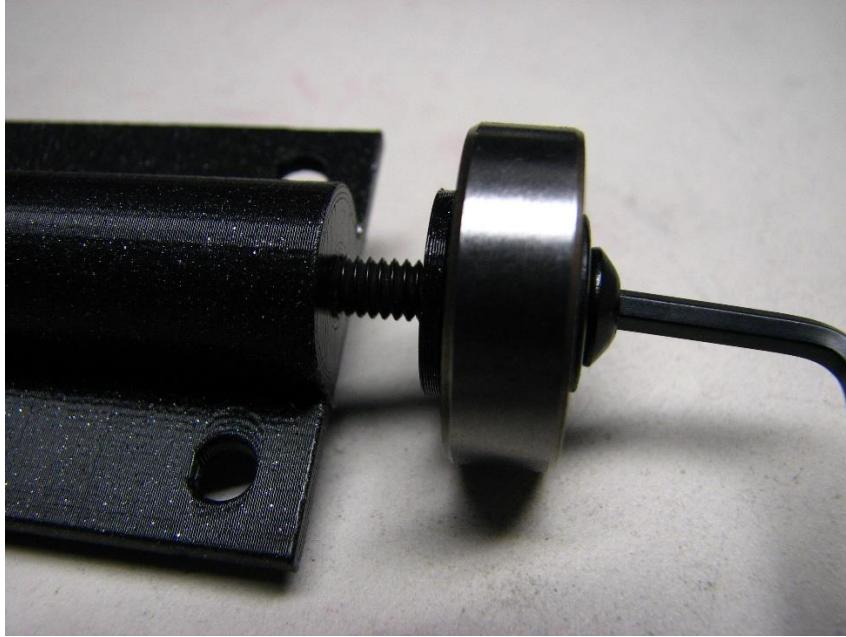
Construct the wheel assembly (truck):

Place the wheel alignment pieces #5 on a hard-flat surface with the larger flat side on the surface. Then press the wheels #4 onto the alignment pieces #5, being careful to keep the wheels parallel to the flat surface while pressing them onto the alignment pieces.

Next put one washer #7 on each long screw #6 and push them through the wheel/alignment piece combination. The direction is important: the wheel alignment piece has a “built-in” washer on one side and is flush with the wheel on the other side. The screw #6 head and washer #5 need to be on the opposite side of the alignment piece’s #5 built in washer.



Using the 3/32" Allen wrench, screw in the four wheel assemblies into the two main axils #1 and #2.



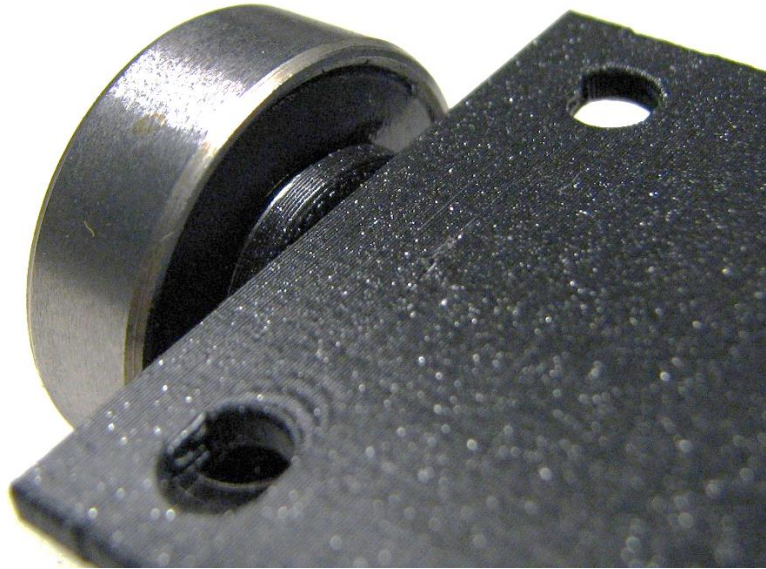
Tighten the screws. Try and keep the screw as straight as possible since this is a metal screw into plastic you do not want to strip the connection. After tightening, loosen the screw about $\frac{1}{4}$ of a turn to allow you to center the washer and then retighten. The washer has a bit of play so can get off-centered if you just tighten the screw without the above step to re-center.

When finished, both assemblies (trucks) should look like this:



Attach the trucks to the bottom of the Ghost Trap:

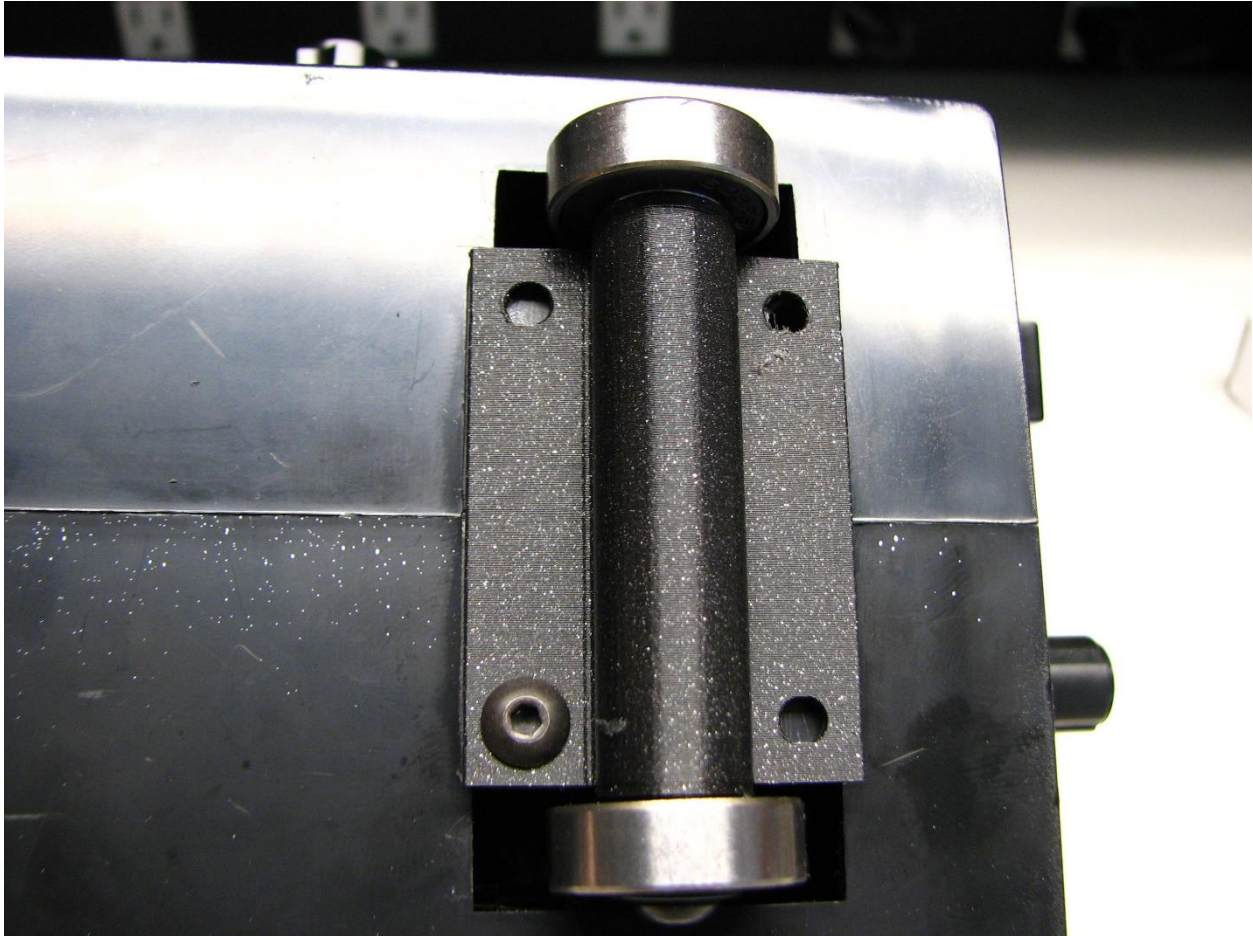
Look at the bottom of each truck: the alignment pieces #5 do extend past the bottom of the flat side of the main axels #1 and #2. This is to help with alignment to the trap and make sure the wheels will not bind:



These extensions will straddle the main base that was prepared in the first part of the instructions. Squeeze/hold the trap so that the two halves are tight against each other and place a truck on each prepared location. The base of the truck should sit flat against the trap and the extensions should be on each side and hold the truck in place.



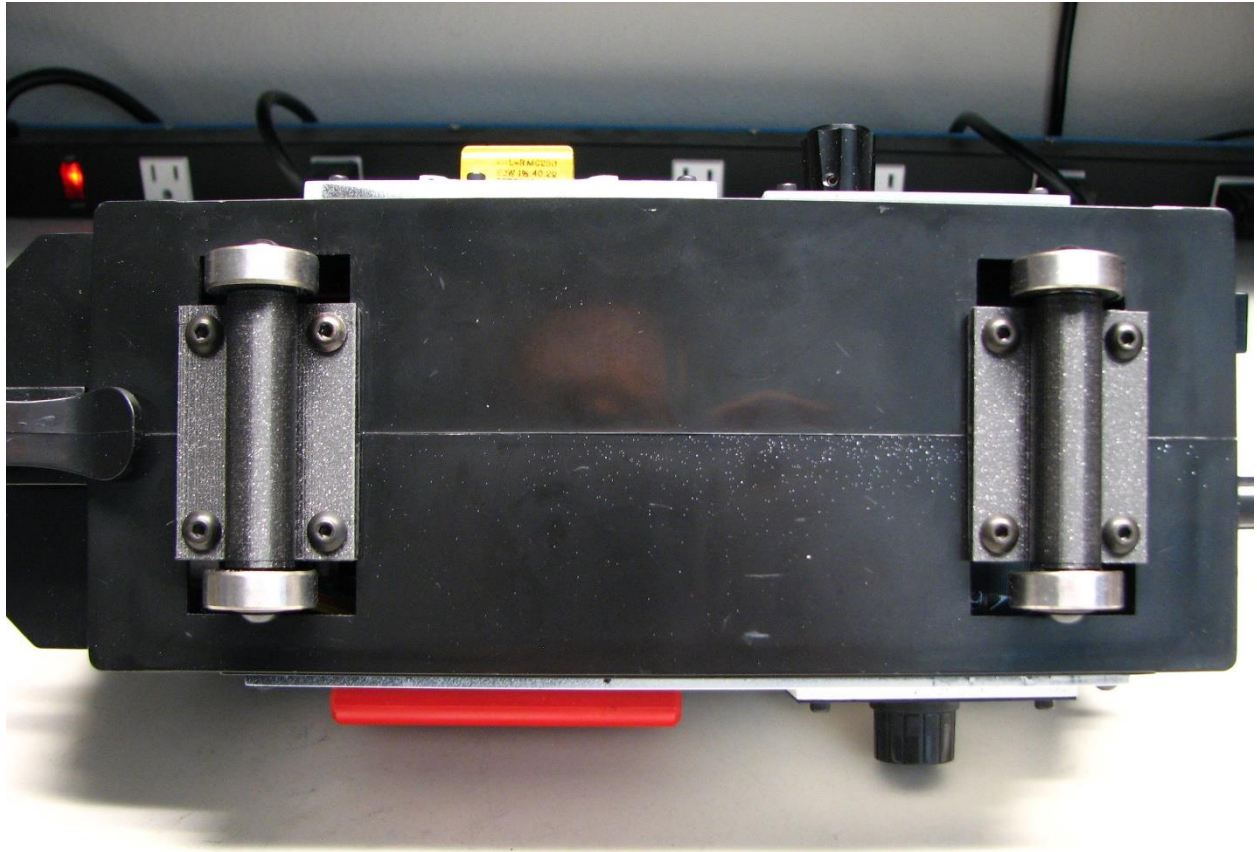
Next drill one corner with the 9/32" drill and use one of the short screws #3 to hold the truck in place. Take care when drilling. There are wires inside this are of the trap, so do not drill too deep! In this trap, I taped the wires out of the way when I installed the cosmetic kit. If you did not do that, you may need to take apart the trap and make sure the wires are not going to get damaged when drilling before you do this!



Next drill the diagonally located hole and attach the screw. This should allow you to make sure the truck is positioned correctly before drilling the other two holes and then screwing in two more short screws #3.

Do the same for the other truck.

You are now finished, and the base of the trap should look like this:



Congratulations and now go out and trap some ghosts in style!